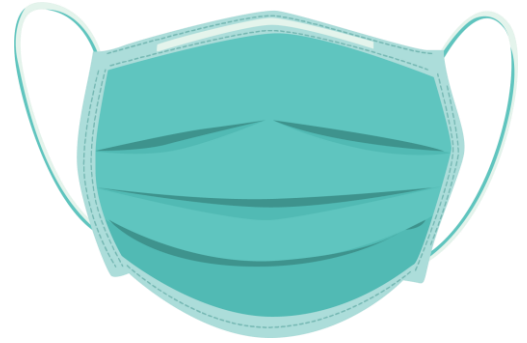


Sewn Mask Inspection/Prep for Laundering – Instructions

Materials:

- Donated Sewn Masks
- Index Cards
- Binder Clips
- Mesh Bags
 - **BLUE** – Tier 1
 - **WHITE** – Tier 2
 - **YELLOW** – Pediatric
- Gloves
- Surgical Masks
- Purple Top Wipes



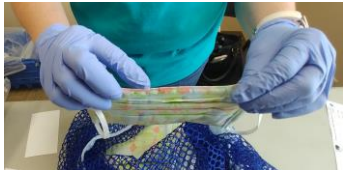
- 1** Wash hands for 20 seconds
Put on Gloves and Mask



- 2** Wipe off table with purple top wipes



- 3** Inspect Masks
Pleats, Nose, Ear and Pocket



Nose wire



Filter pocket



Ear loops

or



Tie straps

Meets Standard: Include in 50 Count in BLUE MESH bag

Non-Standard: Include in 50 Count in White MESH bag

- 4** COUNT: 50 Masks per bag
WRITE: Count on Index Card
CLIP: Card to Bag
TAKE TO LEAD

- 5** LEAD: Log Counts and Total
- Place 5 bags of 50 in clear plastic
 - Notify Linen Logistics bags are ready for laundering

- 6** FINISH:
Reset Room with Mesh Bags, Cards, Clips and Pen
Take off Gloves & Mask
Wash hands for 20 seconds,

